



Particle Counter **KC-01D1/KC-03A1**



- Automatic measurement and systematization with built-in RS-232-C
- Light-weighted but rigid body
(7 kg for KC-01D1, 7.5 kg for KC-03A1)
- Laser diode assures the long life of light source
- Counts ≥ 0.3 μm
- 3 liter/min flow rate enables quick measurement (KC-03A1)
(0.5 liter/min for KC-01D1)
- Unattended measurement by connecting printer (option)



Particle Counter **KC-01D1/KC-03A1**

Specifications

Optical system:
70° light scattering system

Light source:
Laser diode

Photodetector:
Photodiode

Rated Sample air flow rate:
0.5 lit./min* (KC-01D1), 3 lit./min* (KC-03A1)
*For particles with refractive index 1.6

Measurable particle size:
Five steps (0.3 μm, 0.5 μm, 1 μm, 2 μm, 5 μm)

Maximum particle concentration
100,000 particles/lit.* (KC-01D1)
30,000 particles/lit.* (KC-03A1)
* Coincidence loss 5% or less

Warm-up time:
1 hour

Sampling air volume and sampling time:
KC-01D1: 1 lit./2 min., 10 lit./20 min., 0.1CF/5 min.40 sec.,
0.01 CF/34 sec. and manual
KC-03A1: 1 lit./20 sec., 10 lit./3 min. 20 sec., 0.1 CF/56.6 sec.
1 CF/9 min. 26 sec. and manual

Measurement modes
HOLD: keeping measurement result data until next measurement.
REPEAT: automatic repeat measurement after 10-second pause interval

Display
Particle count: Total number of particles above a certain size (max. 6 digit)
COUNT: Illuminated during measurement
LASER: Illuminated when output of internal laser has fallen below rated level or when the laser is turned off.
REMOTE: Illuminated when unit is remote controlled via interface.
OVER: Illuminated when particle count has exceeded the six-digit range of the display.

Alarm: Alarm Beeper and relay for control of external equipment activated when particle count exceeds a preset level
Alarm setting range
100, 1000, 10000, 100000 or STOP
Alarm maximum output terminal capacity
AC 100 V/DC 30 V 1 A

Internal interfaces RS-232-C (standard)
Transmission configuration Full-duplex, asynchronous
Transmission rate 4800 bps, 9600 bps
Data word length 7 bits, 8 bits
Parity check Even, odd, none
Number of stop bits 1, 2
Connector 25-pin, D-sub connector, female

Ambient conditions for operation
-10 to 50 °C, 85% RH or less (no condensation)

Power requirements
100 V AC ±10%, 50/60 Hz, approx. 50 VA

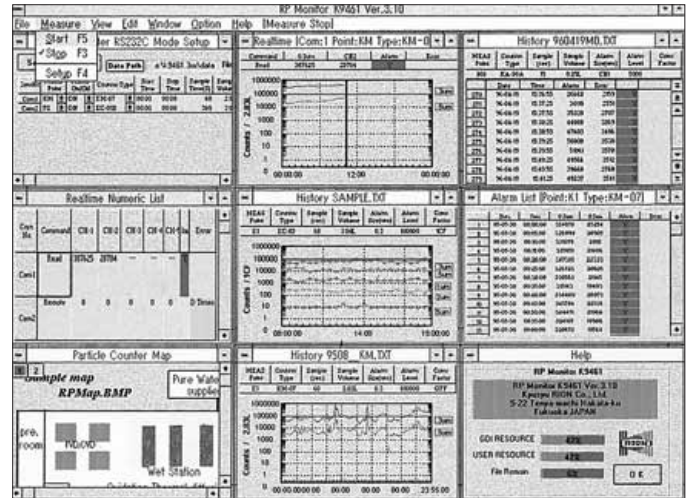
Dimensions
289 (W) X 99 (H) X 350 (D) mm (without protruding parts)

Weight
Approx. 7 kg (KC-01D1)
Approx. 7.5 kg (KC-03A1)

*Outlet joint is not supplied with KC-01D1 and KC-03A1. If you need the counters with outlet joint, please contact the supplier or sales department of RION Co., Ltd.

Optional Units

RP-Monitor K9461 <Ver.2> <Ver.3> <Ver.4>



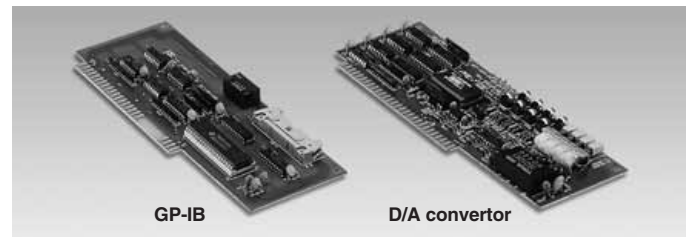
- Runs on Windows® 3.1/95
- Automatically operates particle counters
- Collects counter values, displays files and prints out data
- Available for all Rion's particle counters
- Multi-point Measurement (up to 20 points) possible

Printer KP-05A



Prints out the result (the number of particles for each size range), the test condition, measurement data, measurement time, sample quantity, etc. and can also control the particle counters.

Interface GP-IB, D/A convertor



Specifications subject to change without notice.



20-41, Higashimotomachi 3-chome, Kokubunji, Tokyo 185-8533, Japan
Telephone: +81-42-359-7878 Fax: +81-42-359-7458
URL : <http://www.rion.co.jp/english/>

Distributed by:

