

Affordable Handheld Particle Counter

Handheld Particle Counter **KR-11A/11B**

〈HHPC-2〉



Great for:

- Environmental control in foodstuff manufacturing/packing
- Cleanliness monitoring in pharmaceutical manufacturing and hospitals

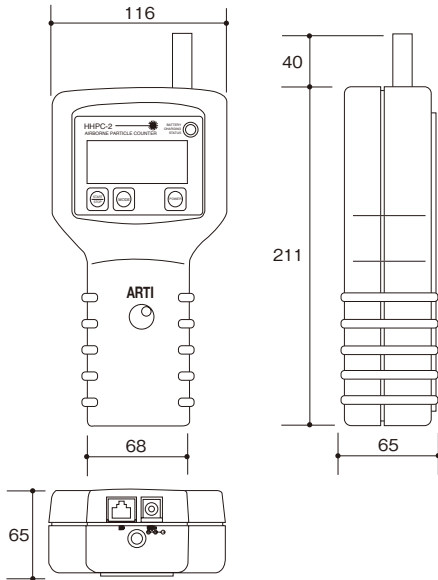
- Compact body, simple operation, easy to read display
- Two particle size channels
 - KR-11A: $\geq 0.3 \mu\text{m}$, $\geq 0.5 \mu\text{m}$
 - KR-11B: $\geq 0.5 \mu\text{m}$, $\geq 5.0 \mu\text{m}$
- Rechargeable battery provides up to 8 hours of continuous operation (charge time 2 hours)
- Buffer function allows storing and redisplay of up to 100 measurement data sets



Specifications

| | | |
|--------------------------------|---|--|
| Optical system | Sideway light-scattering method | |
| Light source | Laser diode (wavelength 790 nm, maximum output 50 mW) | |
| Laser product class | Class 1, IEC 60825-1 / EN 60825-1 | |
| Light detector | Photodiode | |
| Sample flow rate | 2.83 L/min | |
| Particle size (2 channels) | KR-11A $\geq 0.3 \mu\text{m}$, $\geq 0.5 \mu\text{m}$ KR-11B $\geq 0.5 \mu\text{m}$, $\geq 5.0 \mu\text{m}$ | |
| Maximum particle concentration | 70 000 particles/L (coincidence loss max. 5 %) is shown | |
| Measurement modes | Rate mode Cumulative count of preceding 10 s is used to calculate and number of particles per unit volume (L or CF) is shown Totalize mode Measurement is carried out automatically for a specified sample volume and cumulative count is shown Concentration mode Measurement is carried out automatically for a specified sample volume and number of particles per unit volume (L or CF) is shown | |
| Buffer function | Store and recall values for up to 100 measurements | |
| Input/output connector | Serial interface | |
| Power requirements | Built-in battery or AC adapter | |
| Battery | Rechargeable nickel metal hydride (Ni-MH) battery (continuous operation time approx. 8 hours) Charged from supplied AC adapter when power is ON (charge time 2 hours) | |
| AC adapter | Input voltage: 100 to 240 V AC, 50/60 Hz | |
| Dimensions and weight | 211(H) x 116(W) x 65(D) mm (excluding protruding parts), approx. 1 kg | |
| Supplied Accessories | AC adapter x 1 Power cord x 1 1/8 inch tube joint x 1 1/8 inch tube x 1 | Carrying case x 1 Zero count filter x 1 Hand strap x 1 |

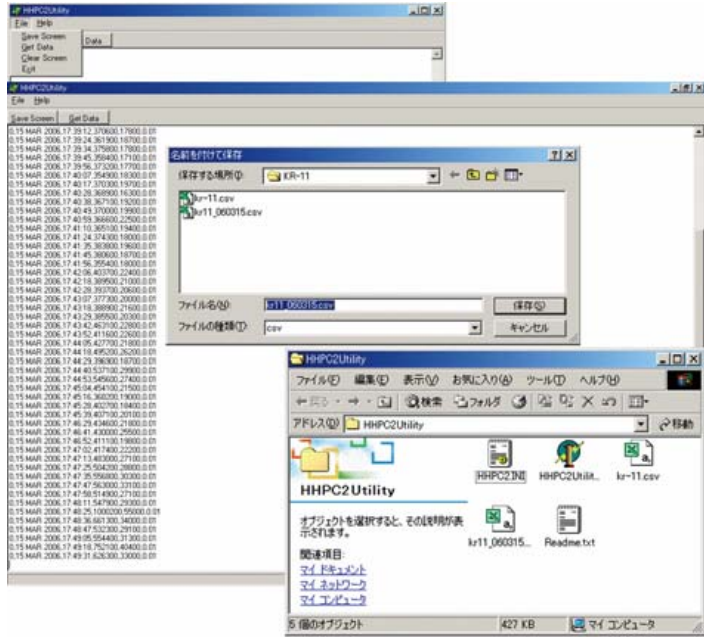
External Dimensions (unit : mm)



* Company names and product names mentioned in this catalog are usually trademarks or registered trademarks of their respective owners.
 * Specifications subject to change without notice.

CSV Download Utility KRSA1376 option

Allows downloading measurement data stored in KR-11A/11B to a computer in CSV format.



- Allows data processing using spreadsheet applications such as Microsoft Excel etc.
- Connection cable supplied

Supported operating systems: Microsoft Windows 2000/XP

Printer DPU-414 option

(Seiko Instruments)

For printout of measurement data. Battery driven operation supported.



```

** SENSOR CAL ALARM **
05 JAN 2000 01:10:44
0.3um = 51000/CF
0.5um = 29400/CF

** SENSOR CAL ALARM **
05 JAN 2000 01:10:47
0.3um = 31140/CF
0.5um = 20400/CF

** SENSOR CAL ALARM **
05 JAN 2000 01:10:50
0.3um = 136800/CF
0.5um = 10200/CF
    
```

Sample printout (KR-11A)

Specifications

| | |
|-----------------------|--|
| Printing principle | Thermal transfer serial dot matrix |
| Printing width | 40 characters |
| Interface | RS-232C |
| Power requirements | Supplied AC adapter (100 V to 250 V) or built-in battery operation |
| Dimensions and weight | 66.5 (H) x 160 (W) x 170 (D) mm, approx. 0.7 kg |

Options

| | |
|-----------------------------|---|
| Printer cable for KR-11/12A | KR121000 |
| Thermal printer paper | TP-14 (6 rolls per pack, roll size 112 mm x 28 m) |
| Clean printer paper | TP-26 (6 rolls per pack, roll size 112 mm x 25 m) |



ISO 14001 RION CO., LTD.
 ISO 9001 RION CO., LTD.

Distributed by:

RION CO., LTD.
<http://www.rion.co.jp/english/>

3-20-41, Higashimotomachi, Kokubunji,
 Tokyo 185-8533, Japan
 Tel: +81-423-59-7878, Fax: +81-423-59-7458