



# RP Monitor EVO

(Multi point monitoring software)

## *K0505 Ver.2/Ver.3*

This software will allow you to control particle counters for automatic operation, data collection, data display, filing, and printing

Tree view is used for easy operation, settings for measurement points and conditions



### *K0505 Ver.2*

(Serial mode)

Control of up to 8 ports/  
8 particle counters in  
serial communication mode

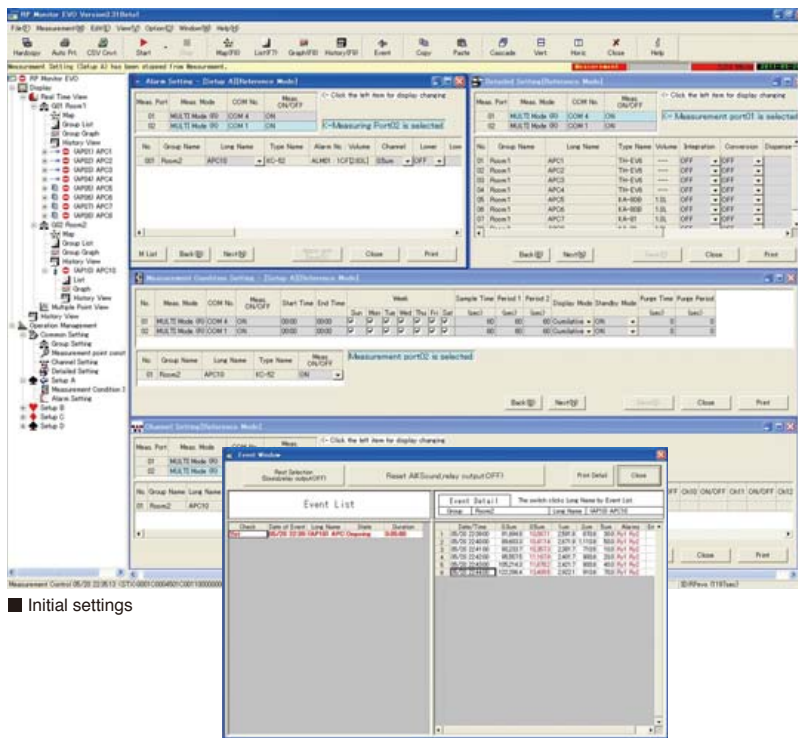
### *K0505 Ver.3*

(Multi point mode)

Controls particle counters in serial  
mode and up to 32 points in multiple  
points(R) mode simultaneously

# Supports computer validation

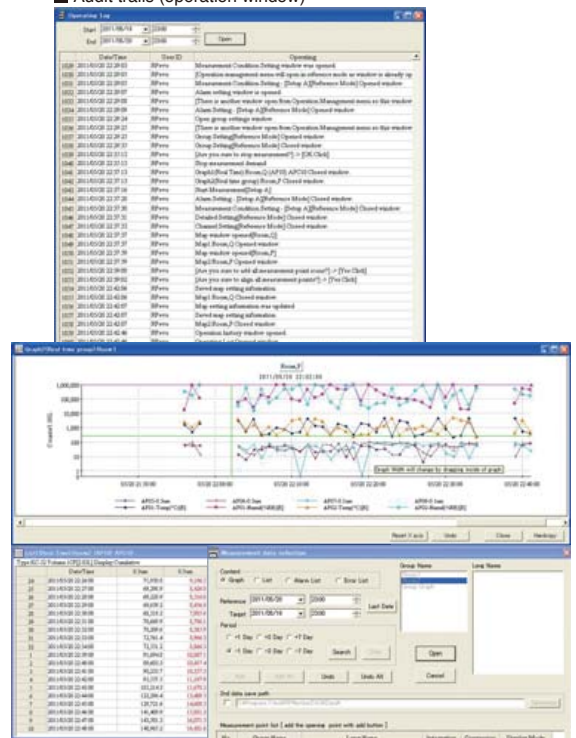
- Measured data items are saved in binary files, which are practically tamper-proof.  
Data can also be automatically output in CSV files.
- The HASP hardware key helps to prevent illegal copying.



■ Initial settings

■ Event window (alarm or error indication)

■ Audit trails (operation window)



■ Settings window (graph and list)

## Recommended operating environment for the workstation (WS) main unit

CPU	Pentium 2000 MHz or greater
RAM	1 GB or more
HDD	80 GB or more (varies according to the number of particle counters or measurement terms)
OS	Microsoft Windows XP Professional

Printer	Products that are guaranteed to work with Microsoft Windows XP, 7
Serial	Expansion interface board (products that are guaranteed to work with Microsoft Windows XP, 7 and available as standard devices)
Supplied media	CD-ROM

## Automatic control of particle counters RP Monitor EVO K0505 Ver.2

- Used for controlling particle counters to regulate the start/end of measurement and turn the light source/built-in pump on and off
- Measurement time, period, number of measurements, alarm, and conversion settings

This software can monitor the same number of particle counters to serial ports when it is installed on a computer that can detect multiple serial ports (COM ports).

### Supported models

- KC-01E, KC-03B, KC-20A, KC-22A/22B
- KC-52
- KL-28B/28BF, KE-40B1
- KS-16/16F, KS-17A/17B

### Data storage format

- Binary file format (Conversion to text file (CSV) is also possible)

### Supported OS

- Microsoft Windows XP, 7 (32 bit)

## Multi-point monitoring system RP Monitor EVO K0505 Ver.3

- Regulates the start/end of measurement and turns the light source/built-in pump on and off
- Measurement time, period, number of measurements, alarm, and conversion settings
- Able to control up to 32 points in a sensor multi-point monitoring system (including serial mode)
- This software also allows you to insert comments (at the beginning of a measurement or in a history graph)

### Supported models

- KL-28B/28BF (option board required)
- KS-16/16F, KS-17B, KZ-51
- KA-80B, KA-82, KR-02C, KR-03
- KC-24, KM-27(manifold system)

### Data storage format

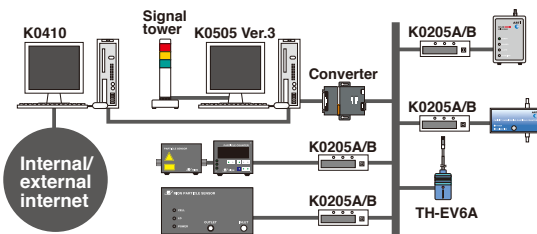
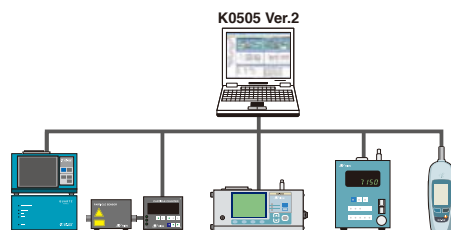
- Binary file format (Conversion to text file (CSV) is also possible)

### Supported OS

- Microsoft Windows XP, 7 (32 bit)

### Peripheral device models

- Automatic alarm mail delivery system K0410, particle count and alarm status indicator K0205A/B, digital temperature/humidity converter TH-EV6A, signal tower



\* Company names and product names mentioned in this catalog are usually trademarks or registered trademarks of their respective owners.  
\* Specifications subject to change without notice.

ISO 14001 RION CO., LTD.  
ISO 9001 RION CO., LTD.



Distributed by:



3-20-41, Higashimotomachi, Kokubunji,  
Tokyo 185-8533, Japan  
Tel: +81-423-59-7878, Fax: +81-423-59-7458