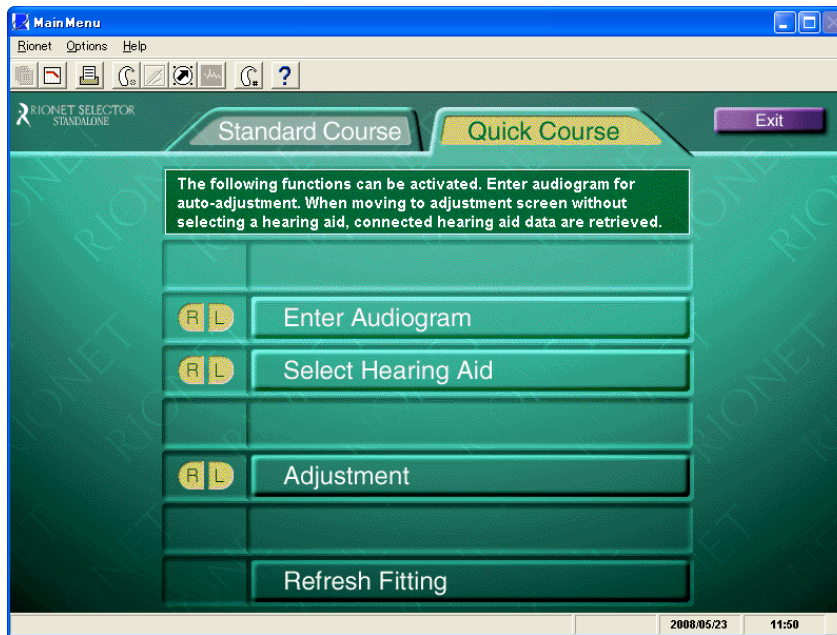


Rionet Selector Basic Flow

1. Top Page e.g.) Quick course

It is available to choose “Quick Course” or “Standard Course”. (Main Menu)

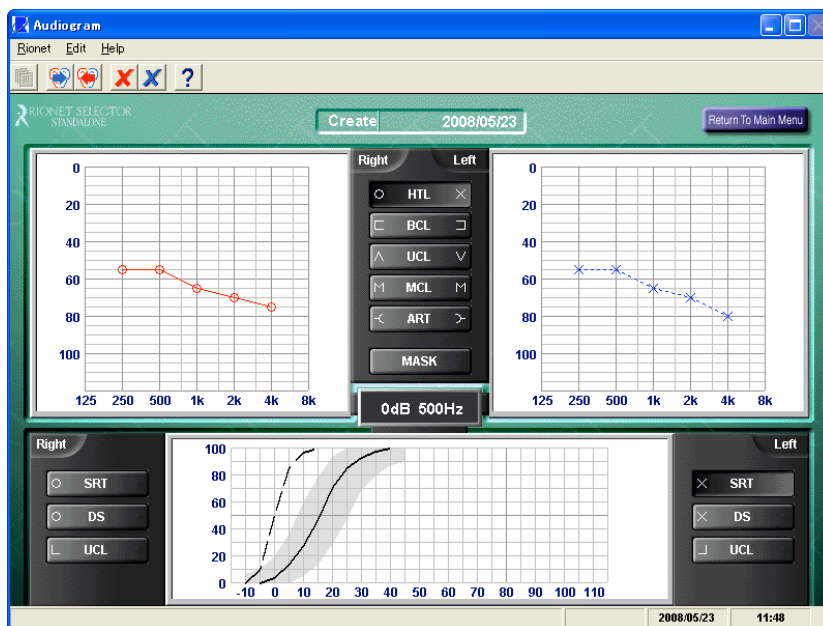
This screen copy shows “Standard course”. If you choose “Quick Course”, the menu will start from “2. Enter Audiogram”.



2. Enter Audiogram

It is available to select both digital and analog hearing aids in the same program.

You don't have to change the program depending on series. You will need just one program. Even when you want to fit analog hearing aids, you can type patient data and can refer to the fitting range in this program.



3. Select Hearing Aid

Select Hearing Aid

Rionet Help

RIONET SELECTOR STANDALONE

R: [] L: [] Recomm.:Both

Return To Main Menu

Condition

Existing model All model

Digital/Programmable

DigitarianU

General

Custom. BTE.

ITE. Body.

Apply for both ears

Clear

OK

No	Model	Type	Prg	HL	Suit.	Batt	Outp	Tone	Coil	Note
1	HI-G6U	Cust.	D...	LMS	AA	312	OPC	4ch.	-	ITC
2	HI-G5U	Cust.	D...	LMS	AA	10	OPC	4ch.	-	CIC
3	HB-G2U	BTE	D	LMS	AA	13	OPC	4ch.	-	NR,AFBC

3 hearing aids have been found.

2008/05/23 11:49

4. Adjustment screen and adjustment guide

Adjustment

Rionet Edit Adjustment Communications Options Sound Check... Help

RIONET SELECTOR STANDALONE

R: HB-G2U L: HB-G2U

Return To Main Menu

Adjustment

Vol. 3 GAIN 16 Dyma.Comp. Triple

LCK 50dB HCK 50dB Beep. Soft

NR Low AFBC Off

Vent type Standard Hook E1

Bore-Dia. 3 Vent dia. None

Input P.Tone Frequency Rule D(vent)

Output(dBSF) GAIN CRC OPC 2cm3

130
120
110
100
90
80
70
60
50
40

100 90 80 70 60 50

100 200 500 1k 2k 5k 10k

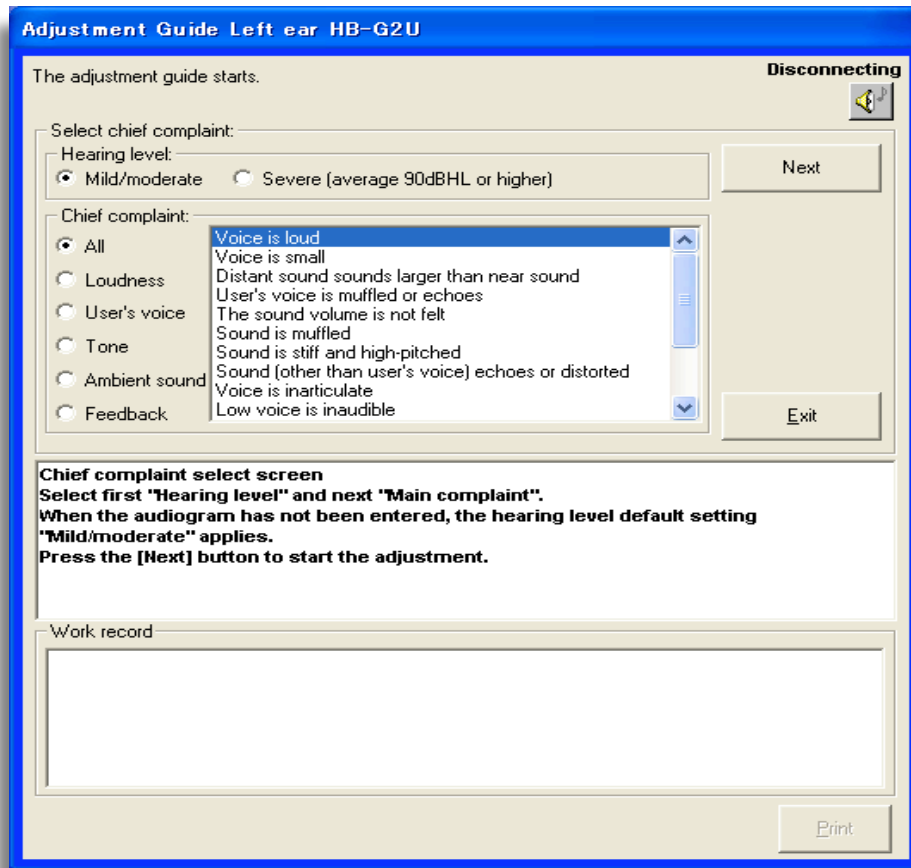
Frequency(Hz)

L GAIN:8,5,7,13,11,10,14,10,10,7 CRC:1,7,1,8,1,8,2,2 OPC:-8

2008/05/23 11:49

5. Adjustment Guide

It is available to adjust hearing aids along with guideline, too.



6. Sound Check

It is available to check how the patient can hear the sound through a hearing aid on the screen.



Please contact when you have questions with more details