

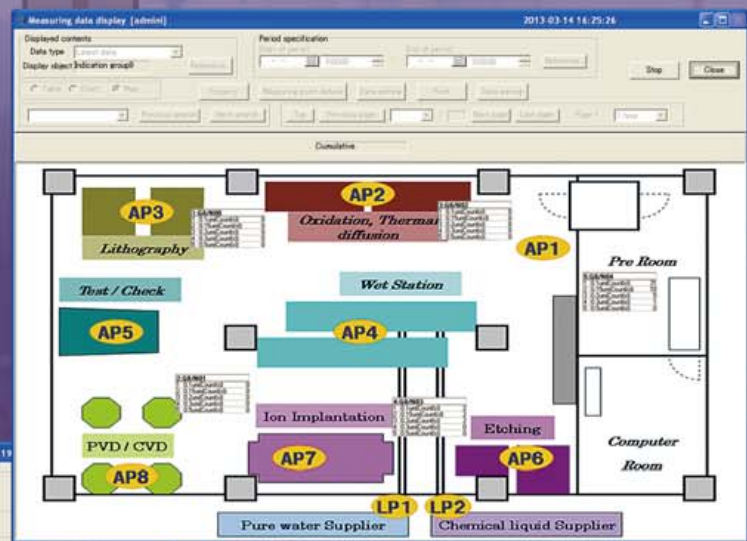
Multi-Point Monitoring System Software

KF-03

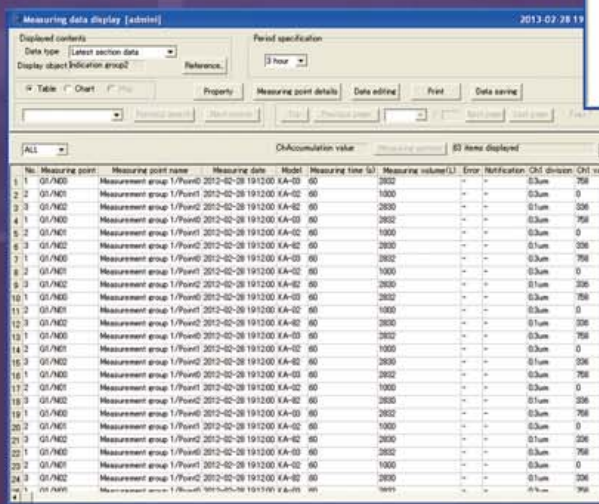
Centrally manage a wide range of information for a facility, such as count data from particle counters, temperature and humidity data from various environment sensors, and more.



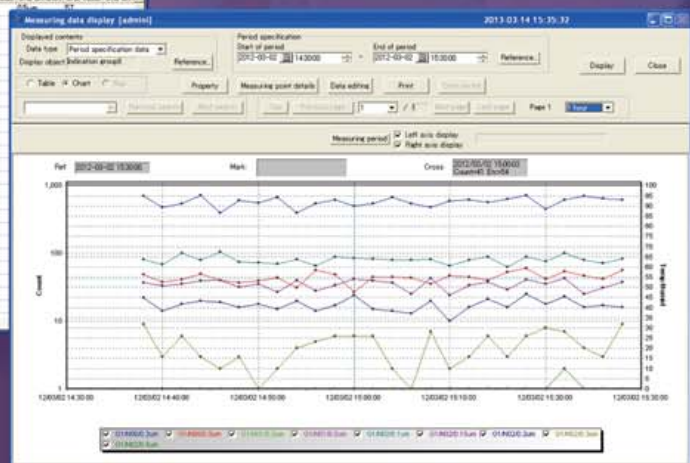
Measurement parameter setting screen



Map display screen



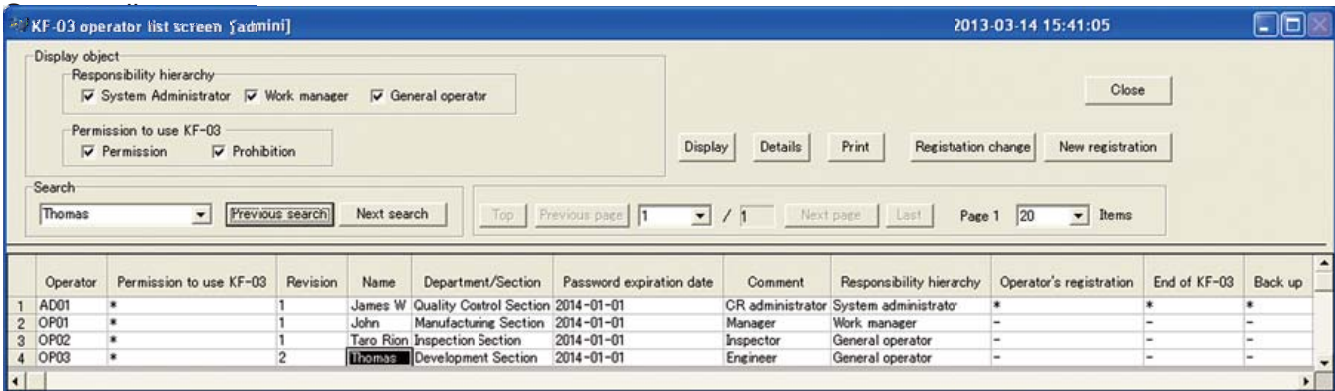
Measurement data display screen



Real-time graph display screen

- Connect up to 248 particle counters [Multi (M) mode] for automatic measurement
- Alarm function allows early detection of particle contamination, also with graph display for trend analysis
- Support for computer validation in pharmaceutical manufacturing
- Integrated security feature using different user access permission levels
- HASP hardware key for protection against unauthorized copying
- Ethernet cabling can be extended to vicinity of measurement point

Support for computer validation in pharmaceutical manufacturing



Operator list screen

KF-03 Specifications

Main Functions	Measurement groups	Up to 8 groups. Measurement parameters are the same for the entire group.
	Operator registration	Registration of operators for KF-03 use List display of registered operators Registration change history display for each operator
	21 CFR Part 11 compliance	Supported as hybrid system without electronic signature function
	Alarm function	Alarms can be set for numeric values and system errors. Alarm output is by relay contacts and/or mail output.
	Connection method	Control computer connected via Ethernet and communication converter(s) to multi-point monitoring system
	Monitoring Computer	To be determined in consultation, depending on operation method

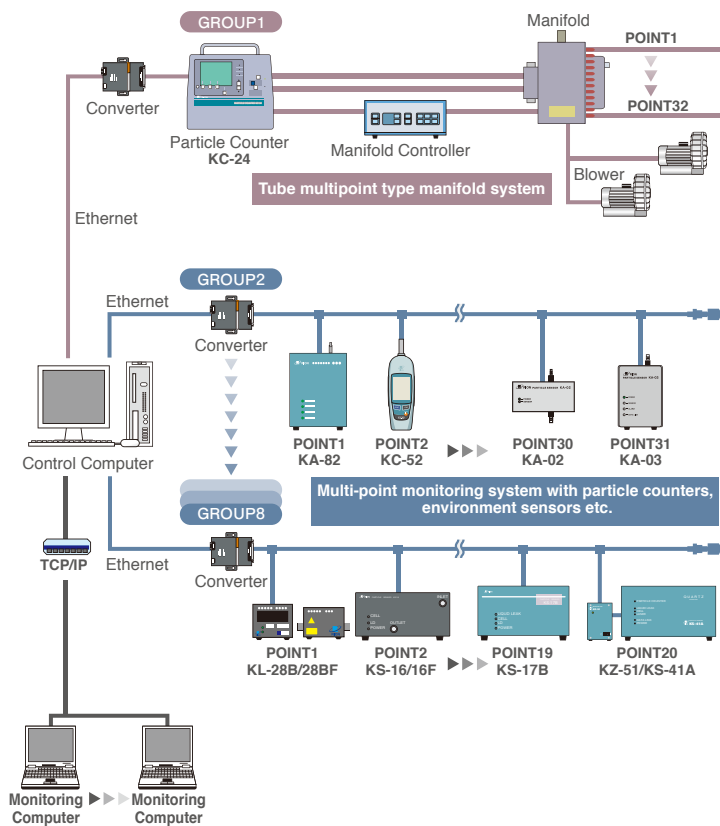
Measurement modes	Multi (R) mode	<ul style="list-style-type: none"> Max. number of measurement points: 160 (20 units x 8 groups) Supported models: KA-82, KS-16/16F, KS-17B, KL-28B/28BF (option board required) Max. number of measurement points: 248 (31 units x 8 groups) Supported models: KA-02, KA-03, KC-52, KS-41A/41B Max. number of measurement points: 8 (1 unit x 8 groups) Supported models: KC-31/32 (Communication converter not required)
	Multi (M) mode	<ul style="list-style-type: none"> Max. number of measurement points: 248 (31 units x 8 groups) Supported models: Specified models of KM series
	Manifold (M) mode	<ul style="list-style-type: none"> Max. number of measurement points: 256 (32 units x 8 groups) Supported models: KC-24 and KM-27 + tube multi-point system implemented with manifold
	Product supply media type	CD-ROM

System Requirements

Computer	
Operating system	Microsoft Windows® XP (Japanese version required for displaying Japanese)
CPU	Pentium 4, 2.0 GHz or higher
RAM	2 GB or more
HDD	80 GB or more (RAID1 recommended)
Other items	CD-ROM drive

Peripheral equipment	
Printer	Printer guaranteed to work with Microsoft Windows XP® Communication converter
Communication converter	Ethernet to RS-485 communication protocol converter (option)
Alarm unit	Used for alarm output. Ethernet to relay contact output (option)

Example for multi-point monitoring system with KF-03



* Company names and product names mentioned in this catalog are usually trademarks or registered trademarks of their respective owners.
* Specifications subject to change without notice.



Distributed by:



3-20-41, Higashimotomachi, Kokubunji,
Tokyo 185-8533, Japan
Tel: +81-423-59-7878, Fax: +81-423-59-7458