

# Airborne Particle Counter *KC-20A*

**Large particle counter with internal printer  
for functional enhancement**

For monitoring large suspended particles in coating or precision assembly processes



- Simultaneous 5-stage particle measurement and display  
≥10  $\mu\text{m}$ , ≥20  $\mu\text{m}$ , ≥30  $\mu\text{m}$ , ≥50  $\mu\text{m}$ , ≥100  $\mu\text{m}$
- Work environment measurements realized quickly with 30 L/min sample airflow
- Simpler operation made possible by automatic flow control
- Eye-friendly LCD screen, volume conversion also possible
- Internal thermal printer. Dust free thermosensitive paper also available (optional)

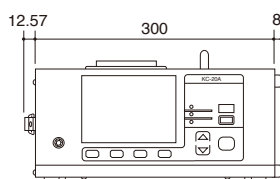
## Specifications [KC-20A]

Optical system	Light-scattering method
Light source	Laser diode, wavelength: 780 nm, rated output: 3 mW
Laser product class	Class 1, IEC 60825-1
Light detector	Photodiode
Flow rate	30 L/min
Size range (5 channels)	$\geq 10 \mu\text{m}$ , $\geq 20 \mu\text{m}$ , $\geq 30 \mu\text{m}$ , $\geq 50 \mu\text{m}$ , $\geq 100 \mu\text{m}$
Maximum particle number concentration	2 000 particles/L (coincidence loss 5 %)
Measurement time	
Random time	10 sec to 2 h and manual
Sample flow rate	10 L (20 sec), 28.3 L (57 sec), 100 L (3 m 20 sec), 283 L (9 m 26 sec)
Measurement display	Accumulated value, differential value, particle density (unit: 1 L, 28.3 L, 1 000 L)
Input/output connectors	
ALARM	ALARM OUT terminals are shorted by relay contact when the selected particle size measurement value reaches the preset alarm level.
SERIAL	D-sub 9pin (male)
Internal printer	Thermal line/dot
Environmental conditions for operation	0 °C to 35 °C, 30 % to 80 % (no condensation if printer is used)
Power	100 V to 240 V AC, 50/60 Hz, approx. 160 VA
Dimensions and weight	Approx. 135 (H) × 300 (W) × 401 (D) mm (excluding projections), approx. 11.6 kg
Accessories	Sampling pipe × 1 Sampling tube (vinyl, $\phi 11 \text{ mm} \times \phi 7 \text{ mm}$ , 1 m) × 1 Tube joint × 1 Power cord (for use in Japan, 2.5 m) × 1 Thermal paper TP-08 × 2 Mesh filter × 2

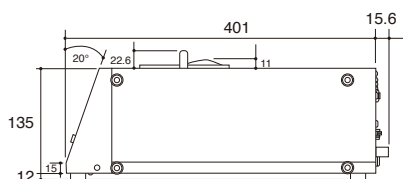
Factory options	External start/stop Outlet D/A converter interface KZ-25-S01
Options	Communication cable CC-61A/63A (9pin use) Trunk* KC-01-521 Air filter Mesh filter Thermal paper TP-08 (6-roll pack) Lint-free thermal paper TP-10 (6-roll pack)

\* This is for storage only. It is not capable of any transportation.

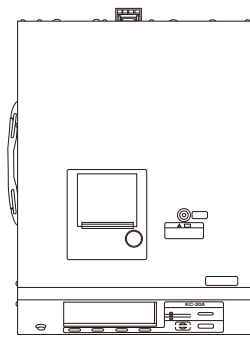
## External configuration (unit : mm)



Front view



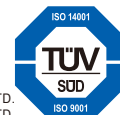
Side view



Top view

\* Company names and product names mentioned in this catalog are usually trademarks or registered trademarks of their respective owners.  
\* Specifications subject to change without notice.

ISO 14001 RION CO., LTD.  
ISO 9001 RION CO., LTD.



Distributed by:

**RION CO., LTD.**  
<https://www.rion.co.jp/english/>

3-20-41, Higashimotomachi, Kokubunji,  
Tokyo 185-8533, Japan  
Tel: +81-423-59-7878, Fax: +81-423-59-7458

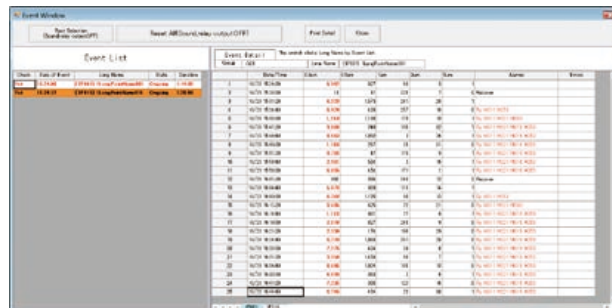
## RP Monitor Evo10 K1701 Ver.2

Option

Used for controlling particle counters to regulate the start/end of measurement and turn the light source/built-in pump on and off. Measurement time, period, number of measurements, alarm, and conversion settings.

● Allows control of up to 8 particle counters in serial mode, using 8 ports.

Operating system: Microsoft Windows 10 Pro 64 bit



Sample display