

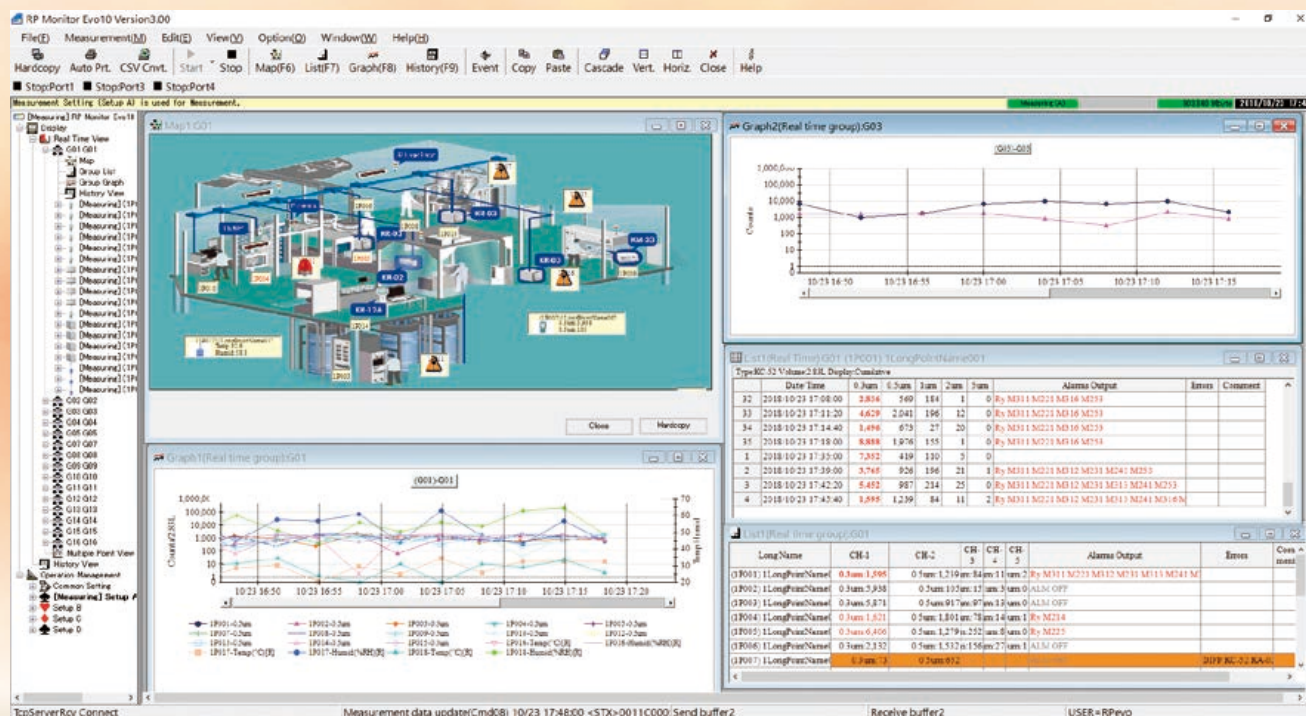


Multi-point Monitoring Software

RP Monitor Evo10 K1701 Ver.2/Ver.3

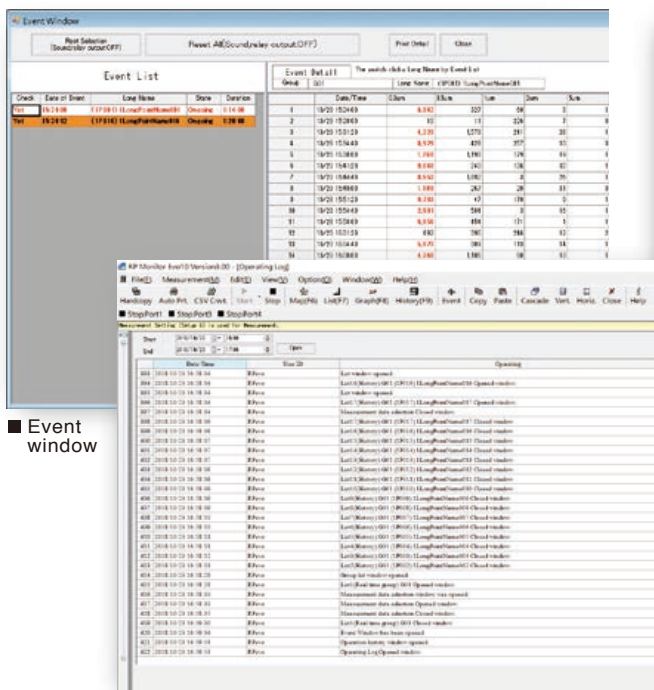
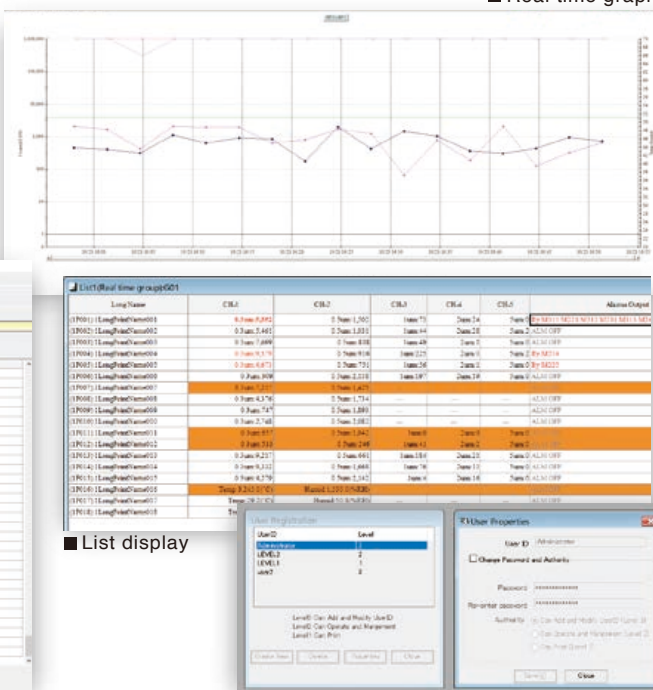
NEW

- Enables control of particle counters including automatic operation, data collection, data display, filing, and printing
- Tree view is incorporated as a part of UI for easy measurement point selection, measurement parameter setting, and other operations
- Compatible with Windows 10 (64 bit)



■ Computer validation supported

Measurement data are saved as tamper-proof binary files. Automatic output in CSV format is also possible.
HASP hardware key for protection against unauthorized copying

■ Real time graphs**■ Event window****■ List display****■ Operation log (audit trail)****■ ID and password registration**

RP Monitor *Evo10 K1701 Ver.2*
(For serial mode)

- **Allows control of particle counter measurement start/stop, and light source/internal pump on/off**
- **Available setting parameters include measurement time, period, number of measurements, alarm, conversion etc.**
- **Comments can be entered (at the beginning of a measurement or in a history graph)**
- **Display mode selection allows real-time numeric indication on another computer, separate from the control computer**

Allows control of up to 8 particle counters in serial mode, using 8 ports

Supported models

- Serial mode

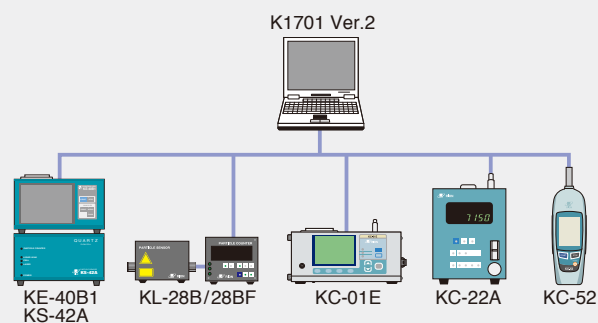
(Control one particle counter via one serial port)

KC-01E, KC-03B, KC-20A, KC-24, KC-52, KC-31/32, KC-22A/22B,
KE-40B1, KL-28B/28BF, KS-16/16F, KS-17B, KL-30A/30AX

■ Read-only serial mode

(Receive data for one particle counter via one serial port)

KC-01E, KC-03B, KC-20A, KC-24, KC-52, KC-31/32, KC-22A/22B,
KE-40B1, KL-28B/28BF, KL-30A/30AX

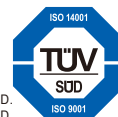


Recommended environment Workstation (WS) (for Ver. 2 and Ver. 3)

CPU	1.8 GHz or higher
RAM	4 GB or more
HDD	80 GB or more
Operating system	Microsoft Windows 10 Pro (64 bit), operation guaranteed with Japanese or English version
Other specifications	CD-ROM drive (used for installation)
	Serial interface
	USB interface (for hardware key)
COM port expansion board	Functioning as standard device [such as Contec COM-8 (PCI) 8ch]
Supplied media type	CD-ROM

* Company names and product names mentioned in this catalog are usually trademarks or registered trademarks of their respective owners.
* Specifications subject to change without notice.

ISO 14001 RION CO., LTD.
ISO 9001 RION CO., LTD.



Distributed by:



Allows simultaneous control of up to 32 particle counters in serial mode and multi mode R (expanded connection up to 160 units)

Supported models

Serial mode

(Control one particle counter via one serial port)

KC-01E, KC-03B, KC-20A, KC-24, KC-52, KC-31/32, KC-22A/22B,
KE-40B1, KL-28B/28BF, KS-16/16F, KS-17B, KL-30A/30AX

■ Read-only serial mode

Head only serial mode
(Receive data for one particle counter via one serial port)

KC-01E, KC-03B, KC-20A, KC-24, KC-52, KC-31/32, KC-22A/22B,
KE-40B1, KL-28B/28BF, KL-30A/30AX

- **Multi mode (R)**

Multi mode (n)
(Using Rion particle counters, continuous repeated measurement without measurement pause intervals is possible)

KC-52, KA-02, KA-03, KA-05, KA-82, KC-31M,
KL-28B/28BF (Option board required), KS-16/16F, KS-17B,
KS-18F(K), KS-41A, KS-41B

■ **Manifold mode (R)**

(For models supporting a tube type multi-point manifold. Control is performed by manifold switching.)

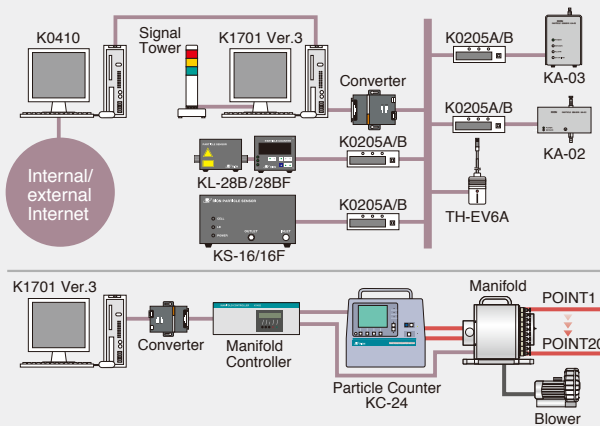
■ **Aerosol Mode**

(Control thirty-one particle counters via ethernet port)

AES-1000-05N-R (Standard type), AES-1000-05H-R (High concentration type)

Peripheral equipment

Automatic alarm mail delivery system K0410,
particle count and alarm status indicator, K0205A/B,
digital temperature/humidity converter TH-EV6A, signal tower



3-20-41, Higashimotomachi, Kokubunji,
Tokyo 185-8533, Japan
Tel: +81-423-59-7878. Fax: +81-423-59-7458